

CLAMPBRO®

STRONG-ARM



GARAGE JACK

MODEL NO: CTJ3000QLB

PART NO: 7623205

OPERATION & MAINTENANCE INSTRUCTIONS

CE

ORIGINAL INSTRUCTIONS

GC1120 - ISS 4

INTRODUCTION

Thank you for purchasing this CLARKE Garage Jack.

Before attempting to use this product, please read this manual thoroughly and follow the instructions carefully. In doing so you will ensure the safety of yourself and that of others around you, and you can look forward to your purchase giving you long and satisfactory service.

SPECIFICATIONS

	CTJ3000QLB
Part number	7623205
Length (not including handle):	630 mm
Width	328 mm
Height	165 mm
Height of saddle from floor (minimum)	130 mm
Height of saddle from floor (maximum)	465 mm
Lift range under rated load	330 - 465 mm
Weight	29.3 kg
Rated Load	3 tonne

GUARANTEE

This product is guaranteed against faulty manufacture for a period of 12 months from the date of purchase. Please keep your receipt which will be required as proof of purchase.

This guarantee is invalid if the product is found to have been abused or tampered with in any way, or not used for the purpose for which it was intended.

Faulty goods should be returned to their place of purchase, no product can be returned to us without prior permission.

This guarantee does not effect your statutory rights.

SAFETY PRECAUTIONS



WARNING: THE OPERATOR MUST FOLLOW ALL INSTRUCTIONS WITHIN THIS INSTRUCTION BOOKLET

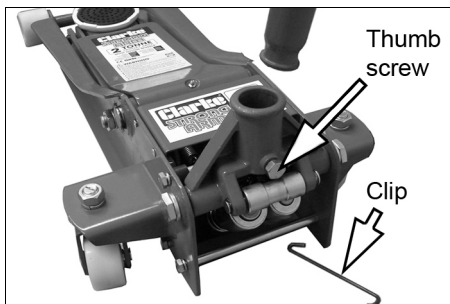
1. This jack is for lifting only, do not move a load using the jack as a dolly.
2. Do not use to lift people.
3. Always inspect the jack before use. Make sure that all parts are in good condition and operating smoothly, and that no cracks or distortion is apparent. If in doubt do not use. Have the damaged parts replaced or consult your CLARKE dealer.
- 4. Make sure that the jack is on a firm level base, and there is no possibility of it slipping when under load.**
5. Make sure the load is taken by the full saddle and that the point of lift on the load, is strong enough to support the load adequately.
- 6. Do not work under the raised vehicle until it is supported by suitable means e.g. axle stands, NEVER rely on the jack to support the vehicle by itself.**
7. Never push a load off the jack.
8. Ensure that all personnel are well clear of a load being raised or lowered.
9. Do not try to lift more than the rated load for the jack, (See "Specifications" on page 3.)
10. Do not use the jack if an oil leak is apparent. Consult your Clarke dealer.
11. Consult the vehicle handbook to determine the correct lifting points.
12. It is necessary that the operator watch the jack and the load during operation.
13. Check the condition of the labels regularly and replace as required.
14. The jack must be maintained and repaired in accordance with these instructions by suitably qualified persons.
15. Do not make any modifications to this jack or adjustment any valves.

UNPACKING AND ASSEMBLY

1. Remove the retaining clip by pressing the handle yoke downwards and pulling the clip away.

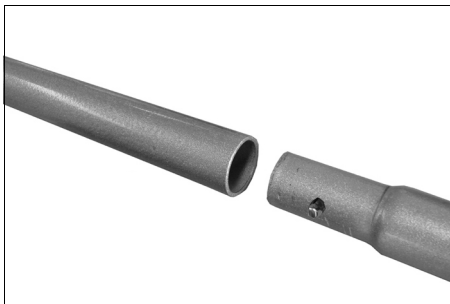
2. Loosen the thumb screw in the yoke until the lower handle can be inserted fully into the handle socket.

- The lower handle has a groove which should engage with the thumb screw once it is re-tightened.
- The socket in the handle will engage with the jack control valve at the base of the yoke.



3. Tighten the thumb screw to secure the lower handle to the jack.

4. Add the upper handle by sliding it onto the lower handle until the spring loaded plunger clips in place.



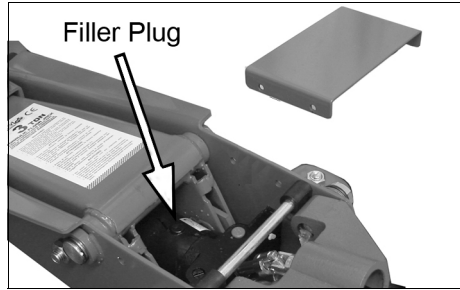
5. Place the protective rubber pad onto the saddle.



PURGING AIR FROM THE SYSTEM

If air bubbles become trapped inside the hydraulic system during shipping or transport, the efficiency of the jack will be reduced and the jack will feel spongy.

1. Turn the control valve counter-clockwise, relieving the pressure inside the jack, then remove the cover plate.
2. Pump the handle several times to purge air from the system, while pressing down on the filler plug when the air is expelled.
3. Turn the control valve clockwise and test the jack. If efficiency is still low, check the oil level as described under Maintenance.
4. The jack is now ready to use.



OPERATION

This jack incorporates a twin piston pump with a 'quick lift' facility. This provides the user with a rapid raising operation for the unloaded jack. When the jack encounters a load (the vehicle to be raised), its distance raised per stroke reduces to provide a gradual and controllable lifting operation.

Before use, inspect the jack for oil leaks or any other sign of damage. Should any be apparent, have the jack repaired by a qualified technician.



WARNING: NEVER WORK ON THE VEHICLE WHEN SUPPORTED ONLY BY A JACK. THIS IS HIGHLY DANGEROUS. THE VEHICLE MUST BE SUPPORTED ON AXLE STANDS OR SUITABLE SUPPORTS, BENEATH THE CORRECT JACKING/SUPPORT POINTS.

1. Ensure the vehicle to be raised is stable and on firm level ground with the wheels chocked.
2. Position the jack so that the saddle is directly beneath the lifting point.
 - Consult the vehicle handbook to determine suitable lifting points.
3. Twist the handle clockwise to close the control valve.
4. Pump the handle to raise the saddle until it reaches the jacking point.
5. Make sure that the saddle is in full contact with the lifting point and that there is nothing that will prevent a clean lift. Keep all personnel at a safe distance before lifting the vehicle.

6. Position axle stands directly beneath suitable supporting points on the vehicle and very gently twist the handle anti-clockwise.
7. This will open the control valve to lower the load onto the stands.
 - Make sure that the axle stands are in good condition and that they can hold the load.
8. Ensure that the axle stands cannot move when supporting the load. Use suitable wheel chocks to stop the vehicle from moving.

NOTE: The jack may move slightly during operation. It is important therefore, that the floor is clean and completely free from debris.
9. To stop it lowering at any point, turn the handle clockwise again. Always avoid a rapid descent by turning the handle slowly.
10. Carefully lower the vehicle onto the axle stand, checking constantly, preferably with an assistant, that the vehicles jacking point rests snugly and cleanly on the axle stand, and that the stand is stable before the weight is taken.

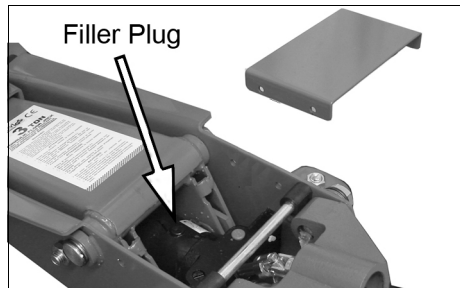
NOTE: Ensure this operation is carried out under complete control. DO NOT allow the load to drop suddenly as this could damage internal parts.
11. Completely remove the jack from the vehicle.

MAINTENANCE

CHECKING /MAINTAINING THE OIL LEVEL

If the jack has been stored for long periods, check for oil leaks before use. If necessary, check the oil level as follows:

1. Ensure the jack is fully lowered by turning the control valve fully anti-clockwise.
2. Remove the retaining screws and lift off the cover plate.
3. Remove the filler plug.
 - The oil should be almost level with the bottom of the oil filler hole.
 - Oil can be topped up using Clarke Hydraulic Oil (p/n 3050830 1 litre).
4. Purge any air from the system and replace the filler plug and cover plate.
5. Dispose of old/spilled oil appropriately and wipe up any spillage.



GENERAL CARE

1. Periodically lubricate the hinges, front wheels & rear castors with light oil.
2. Store in a dry location.
3. In the event of damage or broken components, replacements are available from Clarke Parts & Service.

ENVIRONMENTAL PROTECTION

One of the most damaging sources of environmental pollution is oil products. Never throw away used hydraulic oil with domestic refuse or flush it down a sink or drain. Collect any hydraulic oil in a leak proof container and take it to your local waste disposal site.

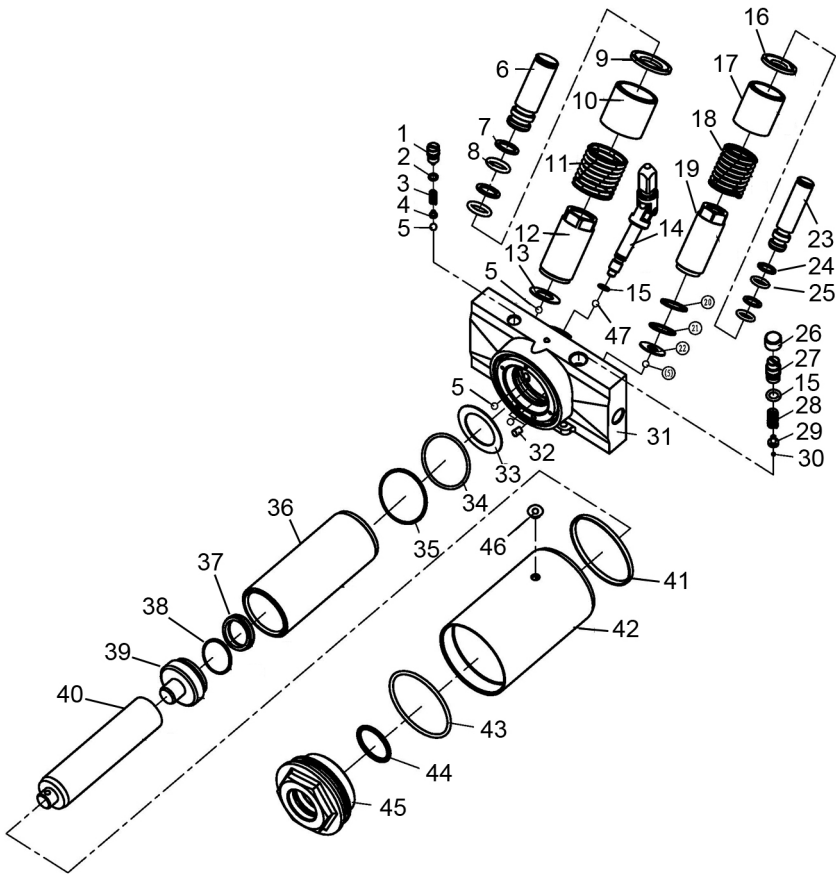
If disposing of this product or any damaged components, do not dispose of with general waste. This product contains valuable raw materials and should be taken to your local civic amenity site for recycling of metal products.

TROUBLESHOOTING

	CAUSE	SOLUTION
Jack will not lift the rated load	Low oil level	Check for leakage and top up if required.
	Release valve not closed	Turn the release knob fully clockwise
	Air in the hydraulic system	Purge the system as on page 6
Jack lowers when under load	Release valve not fully closed	Turn the release knob fully clockwise
	Air in the hydraulic system	Purge the system as on page 6
Pump feels Spongy	Low oil level	Check for leakage and top up if required.
	Air in the hydraulic system	Purge the system as on page 6
Handle raises or flies back under load	Air in the hydraulic system	Purge the system as on page 6
Jack will not lift full height	Low oil level	Check for leakage and top up if required.
	Air in the hydraulic system	Purge the system as on page 6
Jack will not lower completely	Return spring may be faulty.	Return to your Clarke dealer for repair

If any of these remedies fail to restore your jack, consult your Clarke dealer.

COMPONENT PARTS - RAM ASSEMBLY

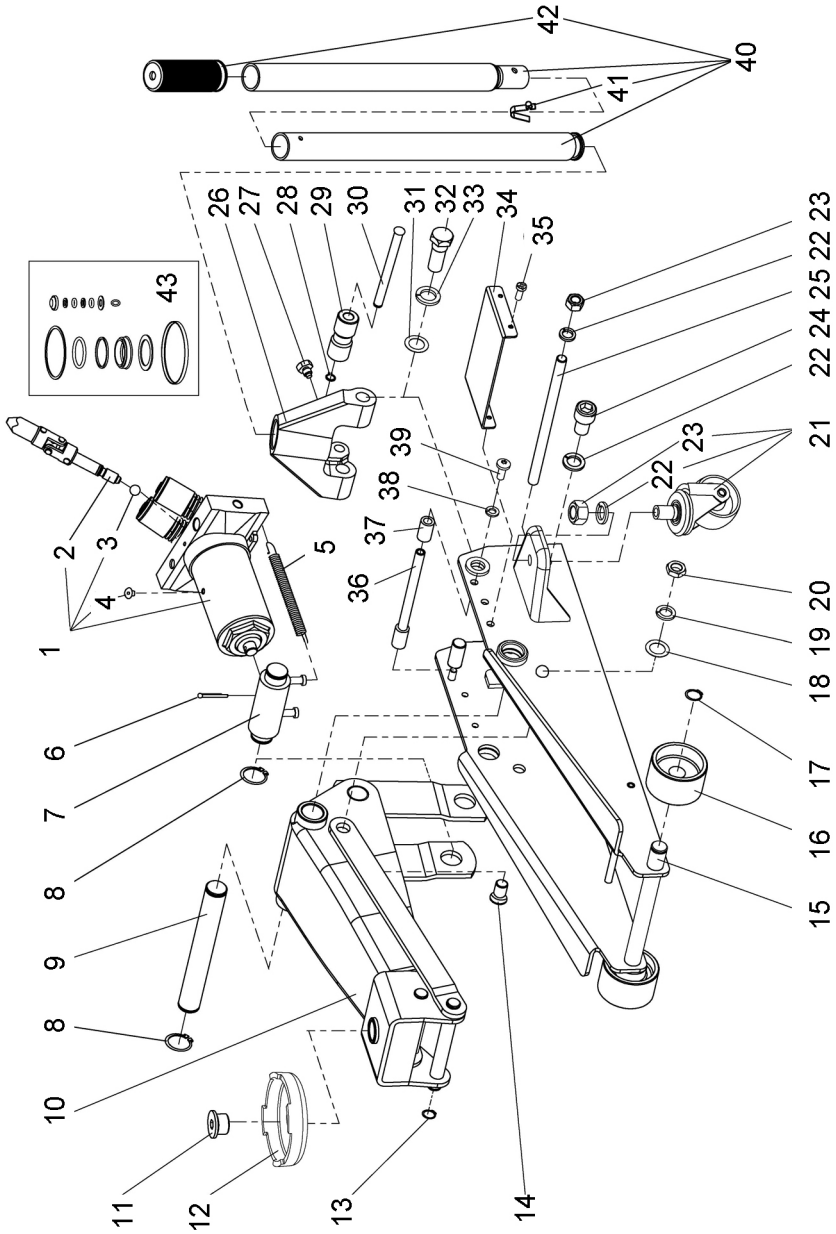


COMPONENT PARTS - RAM ASSEMBLY

	Description
1	Safety Valve Body
2	Sealing Ring
3	Spring
4	Spring Socket
5	Steel Ball
6	Large Plunger
7	Split Washer
8	O-Ring
9	Primary Pump Spring Base
10	Primary Pump Spring Sleeve
11	Primary Pump Spring
12	Primary Pump
13	Washer
14	Joint
15	O-Ring
16	Secondary Pump Spring Base
17	Secondary Pump
18	Secondary Pump Spring
19	Secondary Pump
20	Back-up Ring
21	O-Ring
22	Washer
23	Small Plunger
24	Split Washer

	Description
25	O-Ring
26	Plug
27	Plug Screw
28	Spring
29	Spring Base
30	Ball
31	Valve Body
32	Filter Oil Tube
33	Washer
34	O-Ring
35	Back-Up Ring
36	Cylinder
37	Y-Ring
38	O-Ring
39	Rod Head
40	Rod
41	T-Washer
42	Reservoir
43	O-Ring
44	O-Ring
45	Top Cup
46	Plug
47	Ball

COMPONENT PARTS - GENERAL ASSEMBLY



COMPONENT PARTS - GENERAL ASSEMBLY

	Description
1	Ram Assembly
2	Universal Joint Assembly
3	Steel Ball Bearing
4	Oil Plug
5	Return Spring
6	Cotter Pin 4 x 40mm
7	Coupling Connector
8	C-Clip 25 mm
9	Supporting Shaft
10	Lifting Arm Assembly
11	Pin for Saddle
12	Saddle
13	C-Clip 16 mm
14	Connecting Rod Pintle
15	Frame Assembly
16	Front Wheel
17	C-Clip 18 mm
18	Washer M14
19	Spring Washer M14
20	Nut M14
21	Rear Castor Assembly
22	Spring Washer M12

	Description
23	Nut M12
24	Socket Head screw M12 x 25
25	Rear Shaft
26	Handle Socket
27	Handle Socket Screw M10 x19
28	C-Clip 12 mm
29	Contact Roller
30	Pin
31	Washer M18
32	Spring Washer M18
33	Shoulder Bolt M18 x 54
34	Cover Plate
35	Bolt ST4.8x16mm
36	Handle Socket Shaft
37	Rubber Set
38	Spring Washer M8
39	Bolt M8x16
40	Handle Assembly
41	Handle Lock Pin
42	Handle Cover
43	Seal Kit TZ830023-GS.MF

DECLARATION OF CONFORMITY



Clarke[®]
INTERNATIONAL

Hemnoll Street, Epping, Essex CM16 4LG

DECLARATION OF CONFORMITY

This is an important document and should be retained.

We hereby declare that this product(s) complies with the following directive(s):

2006/42/EC Machinery Directive.

The following standards have been applied to the product(s):

EN 1494:2000+A1:2008

The technical documentation required to demonstrate that the product(s) meet(s) the requirement(s) of the aforementioned directive(s) has been compiled and is available for inspection by the relevant enforcement authorities.

The CE mark was first applied in: 2009

Product Description: 3 Tonne Garage Jack - Quick Lift
Model number(s): CTJ3000QLB
Serial / batch Number: N/A
Date of Issue: 17/11/2020

Signed:

J.A. Clarke
Director

A SELECTION FROM THE VAST RANGE OF

Clarke®

QUALITY PRODUCTS



AIR COMPRESSORS

From DIY to industrial, Plus air tools, spray guns and accessories.

GENERATORS

Prime duty or emergency standby for business, home and leisure.

POWER WASHERS

Hot and cold, electric and engine driven - we have what you need

WELDERS

Mig, Arc, Tig and Spot. From DIY to auto/industrial.

METALWORKING

Drills, grinders and saws for DIY and professional use.

WOODWORKING

Saws, sanders, lathes, mortisers and dust extraction.

HYDRAULICS

Cranes, body repair kits, transmission jacks for all types of workshop use.

WATER PUMPS

Submersible, electric and engine driven for DIY, agriculture and industry.

POWERTOOLS

Angle grinders, cordless drill sets, saws and sanders.

STARTERS/CHARGERS

All sizes for car and commercial use.

PARTS & SERVICE: 0208 988 7400

Parts Enquiries
Parts@clarkeinternational.com

Servicing & Technical Enquiries
Service@clarkeinternational.com

SALES: UK 01992 565333 or Export 00 44 (0)1992 565335

Clarke INTERNATIONAL Hemnall Street, Epping, Essex CM16 4LG
www.clarkeinternational.com